

**QUESTIONS?**

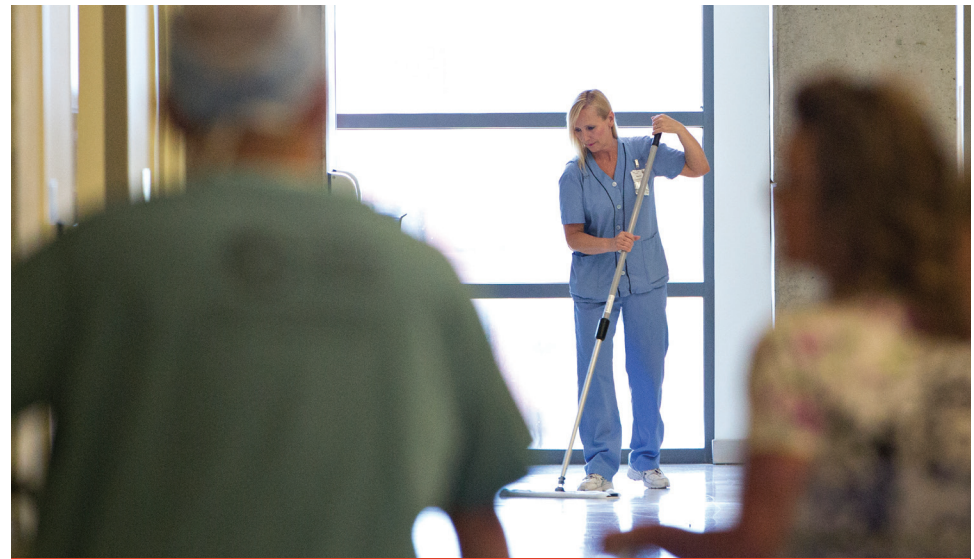
Call the Member Resource Centre toll-free at 1-800-232-7284

Open Monday - Friday, 8:30 - 4:30  
*leave a message after hours and an agent  
will call you back the next business day*

Email: [info@aupe.org](mailto:info@aupe.org)  
[www.aupe.org](http://www.aupe.org)



C22158 AULReP



**YOUR DUES**  
WORKING AS HARD AS YOU DO



**QUESTIONS?**

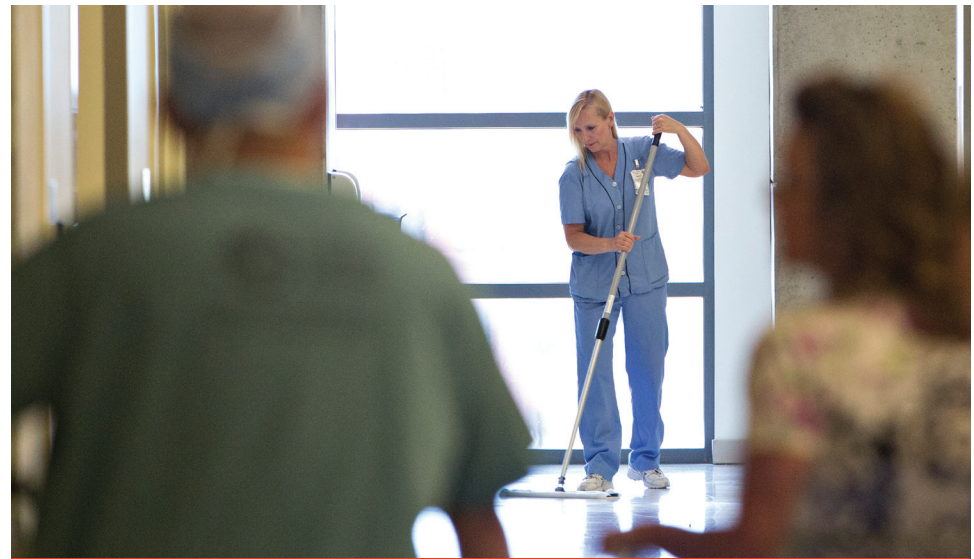
Call the Member Resource Centre toll-free at 1-800-232-7284

Open Monday - Friday, 8:30 - 4:30  
*leave a message after hours and an agent  
will call you back the next business day*

Email: [info@aupe.org](mailto:info@aupe.org)  
[www.aupe.org](http://www.aupe.org)



C22158 AULReP



**YOUR DUES**  
WORKING AS HARD AS YOU DO



# AUPE FINANCING

AUPE is a democratic organization financed and operated by and for its members. Dues are the way union members pool their resources to build collective power.

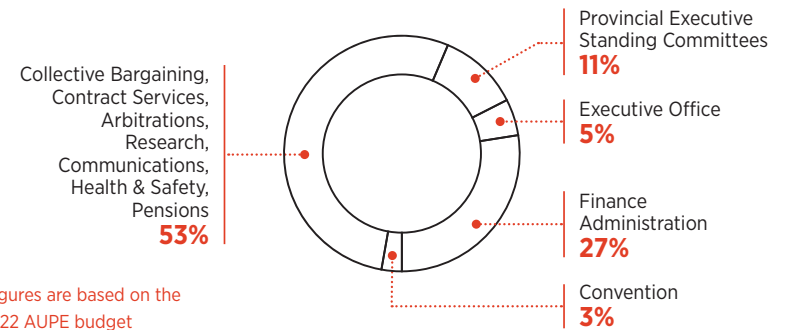
All members who enjoy the benefits of an AUPE collective agreement and union representation finance the organization by paying dues. AUPE's dues rate is 1.25 per cent of a member's basic salary. For example, for each \$100 that a member makes, \$1.25 goes to the union as dues. The dues rate does not apply to overtime or shift premium pay rates, and the money paid by members in dues is tax-deductible.

Members at worksites that have voted to join AUPE do not pay dues until they are protected by a contract, which they have voted to ratify.

Financing the union through dues ensures members like you have the resources you need when you need them. A worker who needs representation for a work-related problem, for example, is not left to bear the costs alone.

AUPE members control the union's finances, and financial information is available for all members to see. Every year, AUPE members elected as delegates to the union's annual Convention review financial statements and vote to approve the budget. Financial statements are also published each fall on the website ([www.aupe.org](http://www.aupe.org)) and available year-round upon request by members.

## YOUR DUES AT WORK\*



# AUPE FINANCING

AUPE is a democratic organization financed and operated by and for its members. Dues are the way union members pool their resources to build collective power.

All members who enjoy the benefits of an AUPE collective agreement and union representation finance the organization by paying dues. AUPE's dues rate is 1.25 per cent of a member's basic salary. For example, for each \$100 that a member makes, \$1.25 goes to the union as dues. The dues rate does not apply to overtime or shift premium pay rates, and the money paid by members in dues is tax-deductible.

Members at worksites that have voted to join AUPE do not pay dues until they are protected by a contract, which they have voted to ratify.

Financing the union through dues ensures members like you have the resources you need when you need them. A worker who needs representation for a work-related problem, for example, is not left to bear the costs alone.

AUPE members control the union's finances, and financial information is available for all members to see. Every year, AUPE members elected as delegates to the union's annual Convention review financial statements and vote to approve the budget. Financial statements are also published each fall on the website ([www.aupe.org](http://www.aupe.org)) and available year-round upon request by members.

## YOUR DUES AT WORK\*

